

# AVDS Fiber Integrity Test

## Quick Guide



### Document Information

Summary: Instructions and recommendations for AVDS troubleshooting of the fiber integrity.  
Revision: 002-0043-01 Rev A AVDS Fiber Integrity Test

© Copyright 2022 Innovative Advantage, Inc. All rights reserved

### Required Tools

Before executing this Quick Guide, the following tools are required.

- AVDS Node (Rev 07 or later)
- AVDS Node connected to at least one additional Node
- Power source
- Ethernet cable (RJ-45)
- Laptop running Windows 10 with admin privileges and an available Ethernet port.
- The AVDS Client application (Rev Z36 or later)

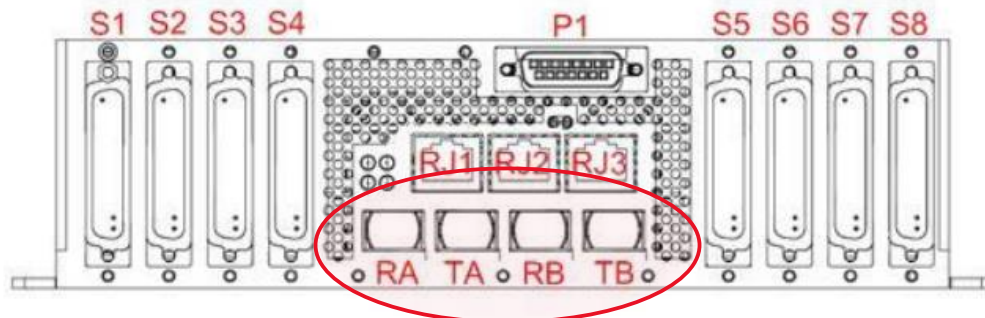
---

*NOTE:* Reference the AVDS Installation Manual and/or AVDS Client User Guide for information on installation and user instructions. [www.ia.support](http://www.ia.support).

---

### Fiber Backbone Ports (RA, TA, RB, TB)

These ports provide the interconnection between nodes across two bands of 12-fiber ribbon. RA (Fiber Receiver A) and TA (Fiber Transmitter A) connect to an upstream node. RB and TB connect to a downstream node. Note that standalone units do not have these ports.



Fiber 1: RA → TB

Fiber 2: TA → RB

### Interconnection

The following diagram illustrates the fiber backbone interconnection.

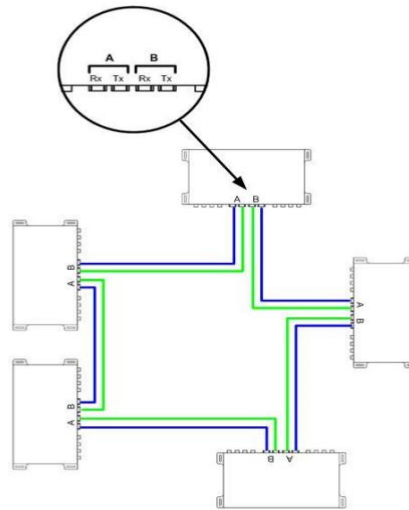
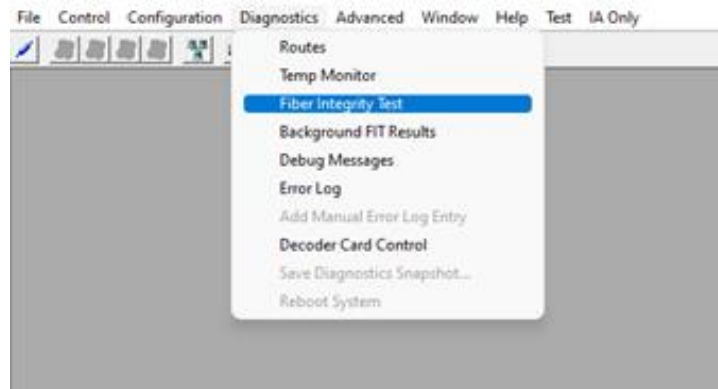


Figure 17 Fiber Backbone Connection Diagram

**AVDS Client**

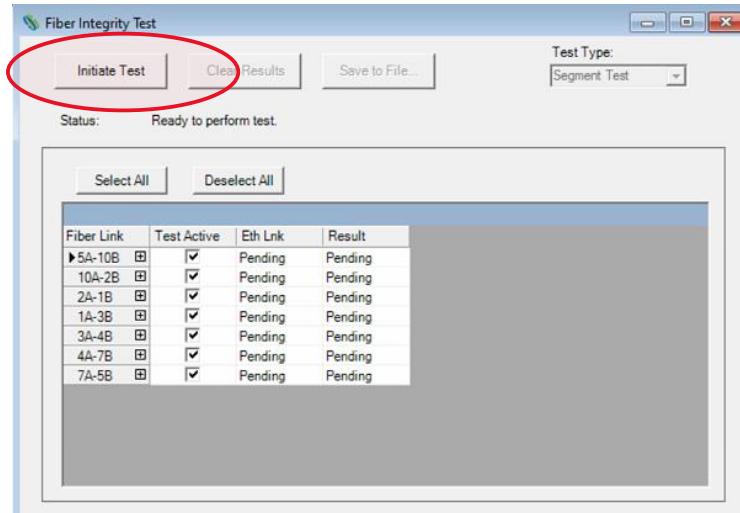
Open up AVDS Client application. Navigate to the Diagnostics tab → Fiber Integrity Test (See image below).



**Fiber Integrity Test (FIT)**

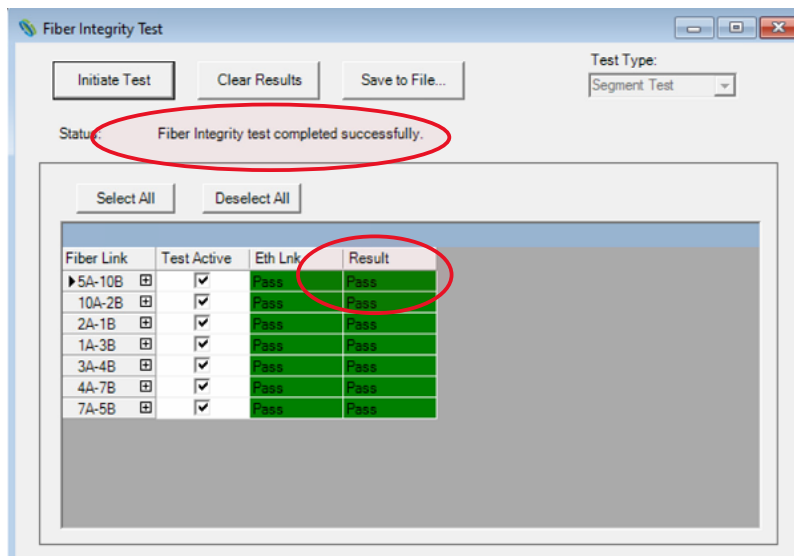
The Fiber Integrity Test is used to verify the fiber optic network.

1. Click → Initiate Test



**NOTE: It is recommended that the system be powered up and given several minutes for the node to complete the stability process before the integrity test is performed.**

2. Allow several minutes for test to complete. Once test is complete the status will show if the test was completed (See image below).
3. The **Result** column will display **Pass**, **Marginal** or **Fail**.  
- If Fiber integrity test has failed. Please contact IA Support for further troubleshooting.
4. Save Fiber Integrity Test to files if applicable.
5. Save diagnostic Snapshot if applicable.



---

*The advanced information simply provides additional details on the test results and does not need to be interpreted by the user.*

---

For additional support, please contact Innovative Advantage at:

[support@in-advantage.com](mailto:support@in-advantage.com) | +1-888-838-8230

