

AVDS Test Pattern Generator

Quick Guide



Document Information

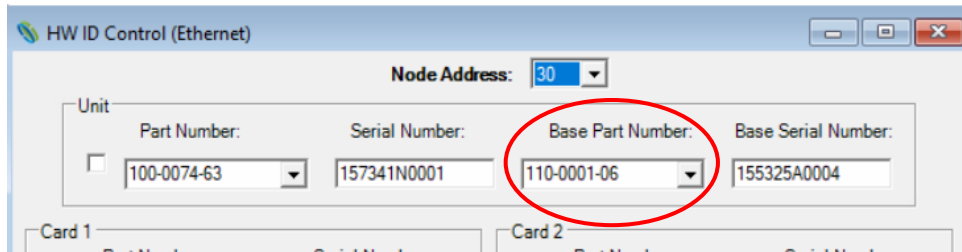
Summary: Instructions and recommendations for adding a TPG Channel in the AVDS Configuration File.

Revision: 002-0045-01 Rev A AVDS TPG Configuration

© Copyright 2022 Innovative Advantage, Inc. All rights reserved

1. Required Tools

- 1.1 Before executing this Quick Guide, the following tools are required.
- The AVDS Client application (890-0002-01 Rev AC5.1 or later)
 - At least one AVDS Node in the System
 - To Determine if the AVDS Node is compatible with a TPG Channel:
 - On the AVDS Client, navigate to **Advanced** tab → **HWID Control**
 - Base Part Number that are **NOT** compatible with TPG are **110-0001-xx** and **110-0029-xx**

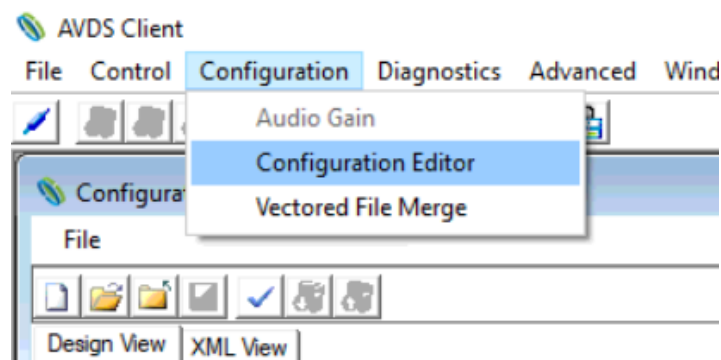


Do not change or configure the HWID as these are set during the production process.

NOTE: Reference the **AVDS Installation Manual** and/or **AVDS Client User Guide** for information on installation and user instructions. www.ia.support.

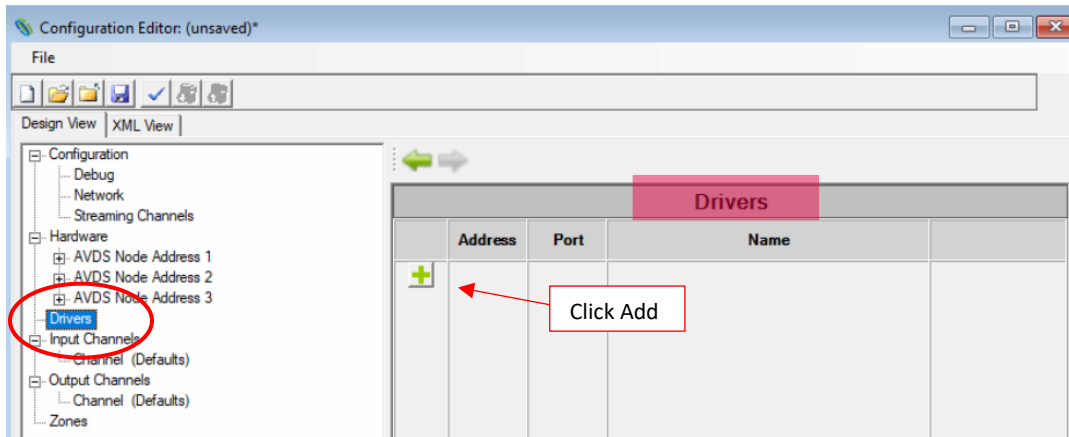
2. AVDS Client

- 2.1 Open up AVDS Client application.
- 2.1.01 Navigate to the **Configuration** tab → **Configuration Editor** (See image below).



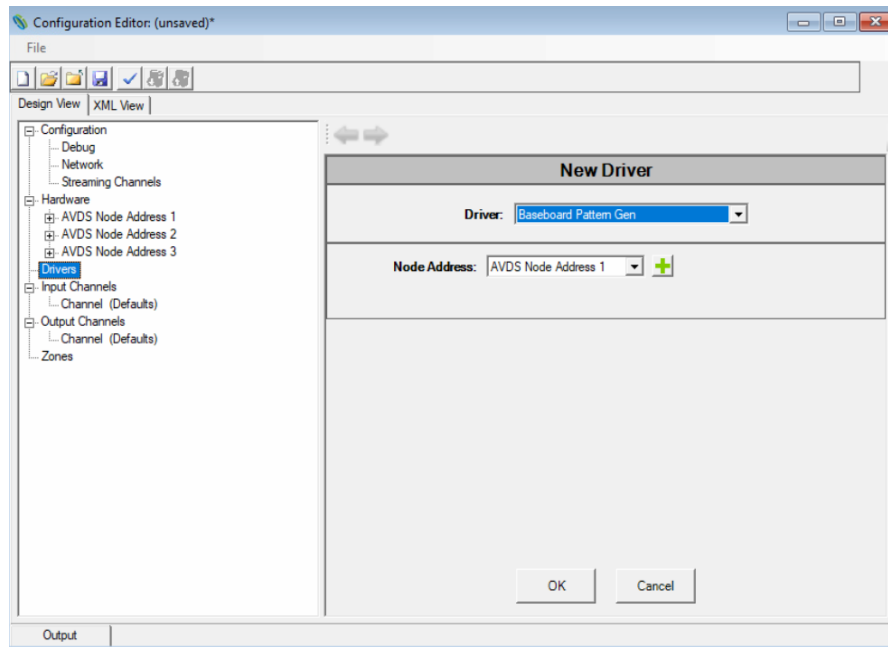
2.2 Configuration Editor

2.2.01 Once the Configuration Editor is opened and AVDS hardware has been added. Select the Driver portion of the editor and click the plus sign to add a Driver.



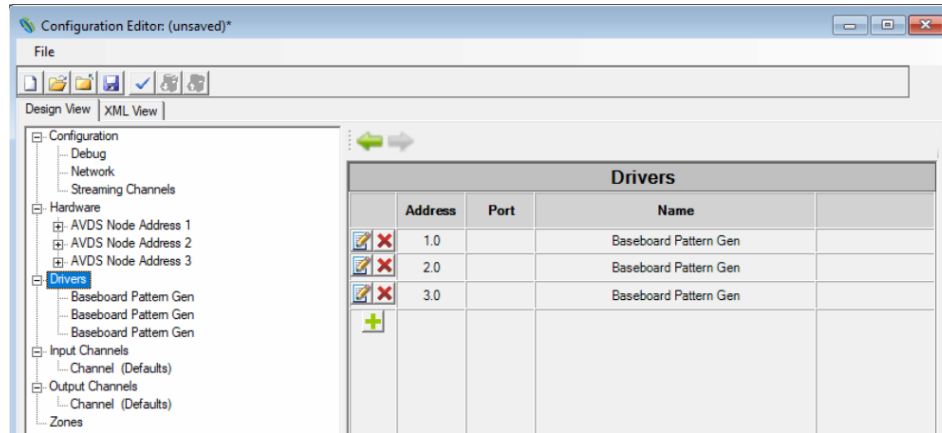
2.3 New Driver

2.3.01 In the New Driver Window, select the drop-down menu and navigate to **Baseboard Pattern Gen**. Select the Node in which you want to add a Baseboard Pattern Generator to and click **OK**.



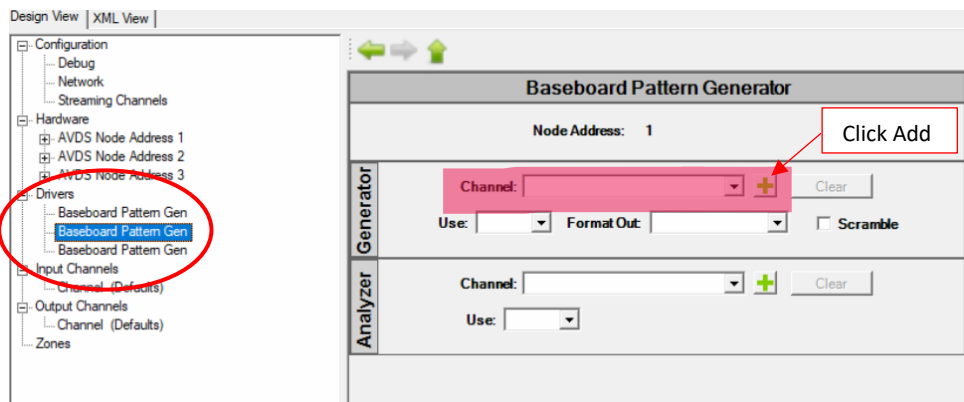
NOTE: IA recommends adding Baseboard Pattern Generators to each AVDS Node in the system

2.3.02 Once you have configured a Baseboard Pattern Generator to each AVDS node your configuration should look like the picture below.



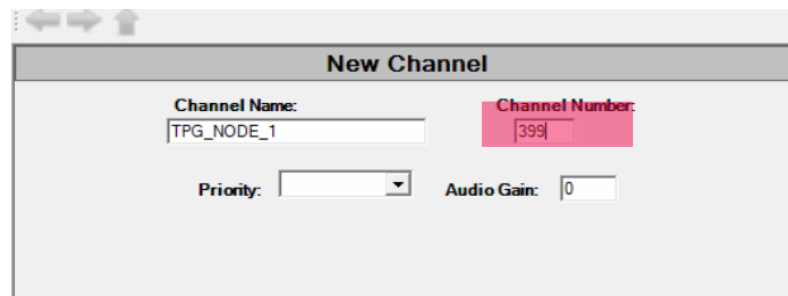
2.4 Input Channel

2.4.01 Now that drivers have been added to its prospective AVDS Node. The next step is to assign **Input Channels** to each Driver. Select the configured Driver and click the green plus sign to create an Input Channel. (See picture below)



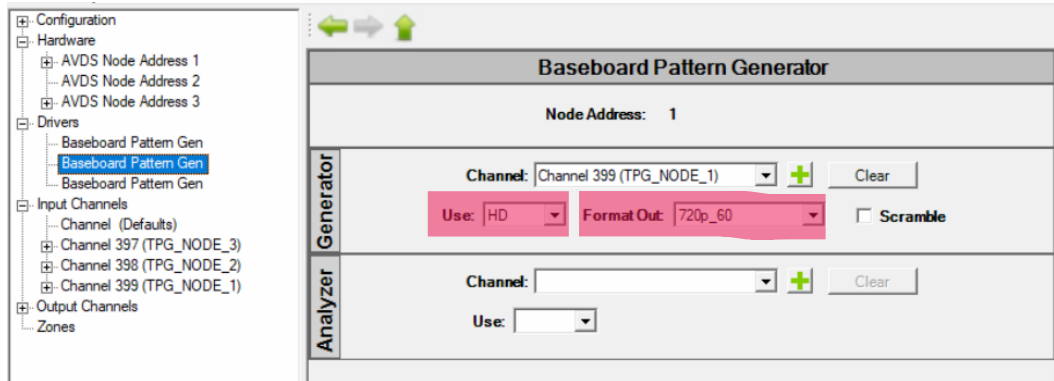
2.5 Assigning Channel Numbers

2.5.01 Create an Input Channel Name for the selected channel. **Channel Numbers 300-399** are dedicated to configuring Baseboard Pattern Generators. This allows us to keep the TPG input channels out of the way for all other configured input channels. Click OK to add.

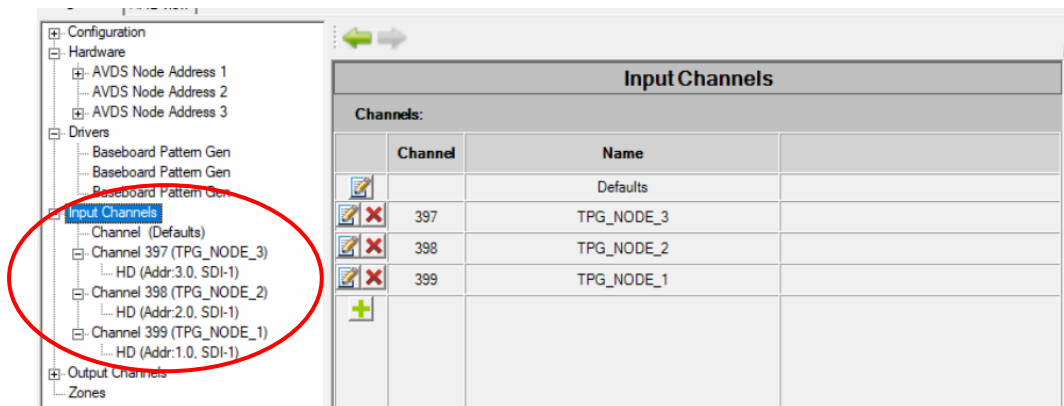


2.6 TPG Format

2.6.01 Navigate to the **Use** case drop-down menu and select **HD**. Then, navigate to the **Format Out** drop-down menu and select **720p60**. This is a standard configuration and use cases may vary.



Repeat steps in **Section 2** for each AVDS Node. Once you have created Input Channels and their individual blocks verify under Input Channels that your configuration is correct.



NOTE: The TPG Driver is addressed as the Node it is configured to and the baseboard (Addr 0). For example, Node 1 TPG is Addressed as 1.0.

For additional support, please contact Innovative Advantage at:

support@in-advantage.com | +1-888-838-8230

